

LDAP

Overview

The goal of the LDAP synchronization module is to apply a nearly random group- and user structure from an LDAP-service and to feed it with necessary information in order to use this as a basis for the TIM group-/ user structure. The foundation for this module constitutes the TimedService component via which the synchronization is run time-controlled.

The module consists of two essential parts which together allow a synchronization of naerly random LDAP-structures. In order to establish an LDAP-module several steps are necessary which are explained in this entry.

ATTENTION! These settings and methods should only be applied by experienced users.

Basic configuration LDAP

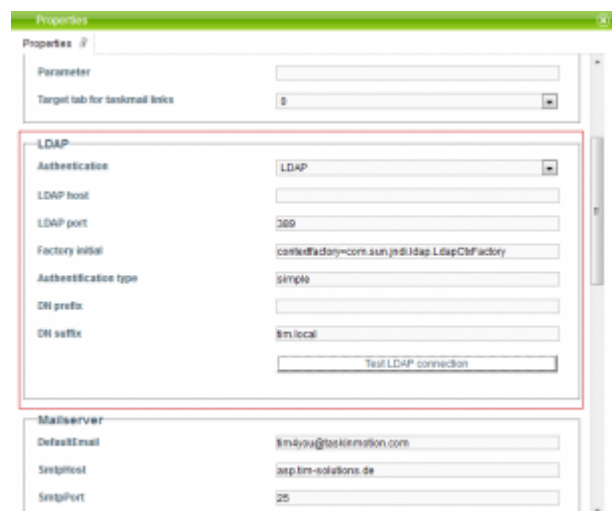
In order to enable TIM to access to an LDAP-server, [the following file](#) has to be adapted:

```
jboss<[version]>\standalon\configuration\tim-ldap.properties
```

These settings apply for all [clients](#)! For a detailed description of the single lines you can get further information here: [here](#)

Test LDAP connection

In order to test elemental LDAP connections, some settings have to be applied in the [client_profile|Clientprofil]]. For this, the following merits are required:



Authentication	Can stay empty
LDAP-Host	Host or IP of the LDAP server
LDAP-Port	Port which the LDAP server responds to (Standard 389)

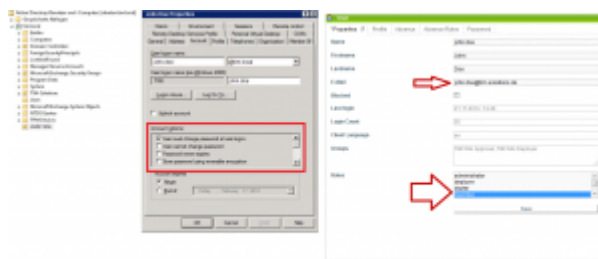
Factory Initial	Must contain the following merit "com.sun.jndi.ldap.LdapCtxFactory"
Kind of authentication	Can be "simple" or "digest-md5" (Standard " simple ")
DNS Prefix	Can stay empty
DNS Suffix	Here, the DNS suffix of the firm has to be deposited

Afterwards an LDAP-lookup can be initiated via the button "**Test LDAP connection**". For this you simply enter an LDAP user and password.

ATTENTION! The password is displayed in clear text!

Establish an LDAP lookup

LDAP lookup means tthat TIM forwards authentication requests to the LDAP server and inquires if the user has the right to register himself. As the rights management is currently deposited in TIM, the user has to be registered in TIM!



IMPORTANT! (see screenshot)

An e-mail address has to be deposited in the [Userprofil](#)

The log-in is not permitted as long as the user has to change his password in the AD

The rights of the user are managed in TIM

LDAP Sync

The LDAP Sync gives the possibility to create users in TIM and to apply attributes from the LDAP. How LDAP attributes are linked to TIM-attributes can be looked up in [the following page](#).

In order to activate the LDAP-Sync, the [the following timer](#) is required.

Example in practice

Such a group structure and the configuration of 4 timers (one timer per group) enables the admin to conviniently allocate rights in TIM. Important is that all TIM-users are in the group **TIM-Member**. If this is not given, it could leat to an admin not being able to open a smartform as the member-right is required.

TIM-Administrator	Sicherheitsgru...
TIM-Deployer	Sicherheitsgru...
TIM-Member	Sicherheitsgru...
TIM-Processmanager	Sicherheitsgru...
TIM-Starter	Sicherheitsgru...

From:

<https://wiki.tim-solutions.de/> - **TIM Wiki** / [NEW TIM 6 Documentation](#)

Permanent link:

<https://wiki.tim-solutions.de/doku.php?id=en:software:tim:ldap>

Last update: **2021/07/01 09:52**

