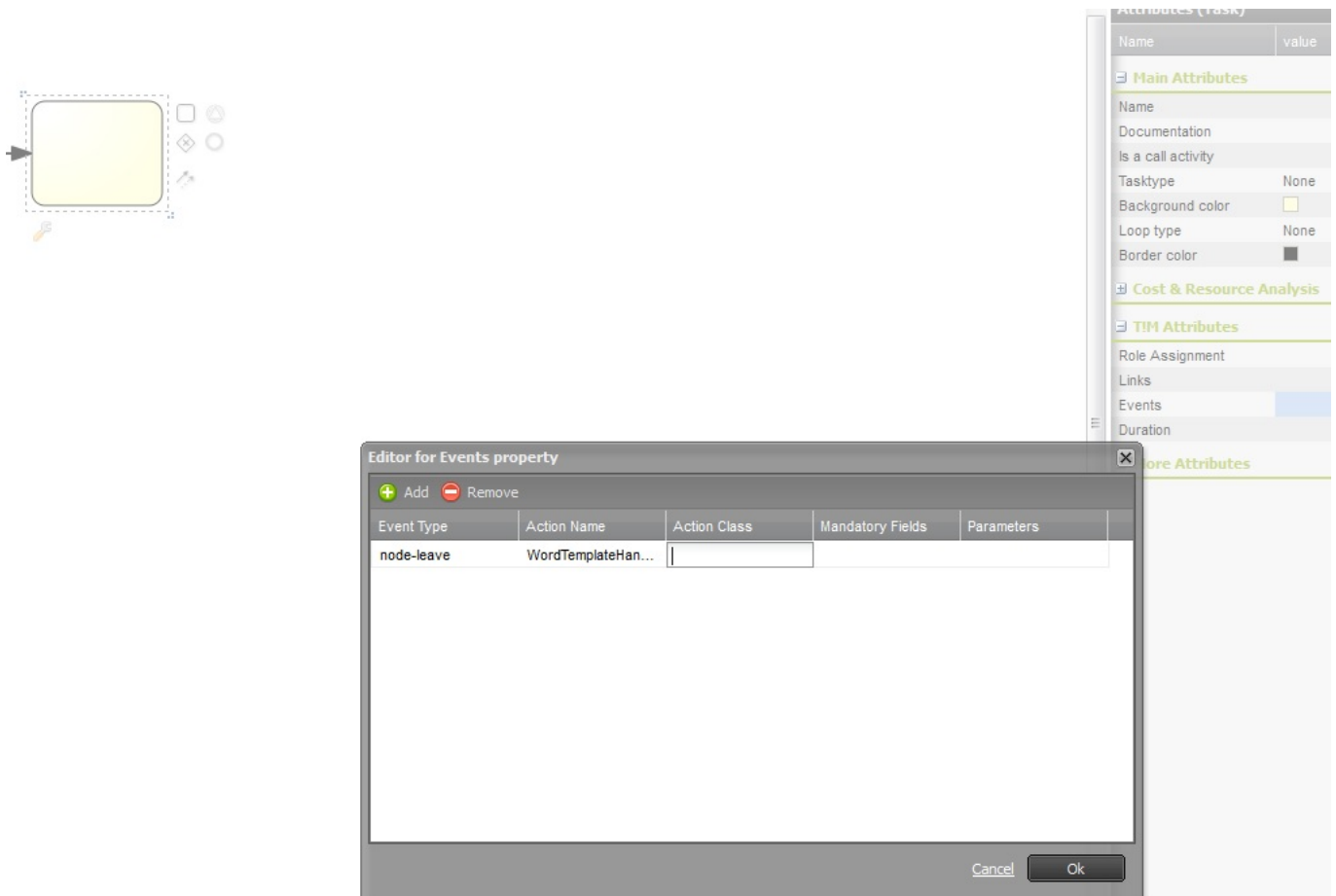


ActionHandler

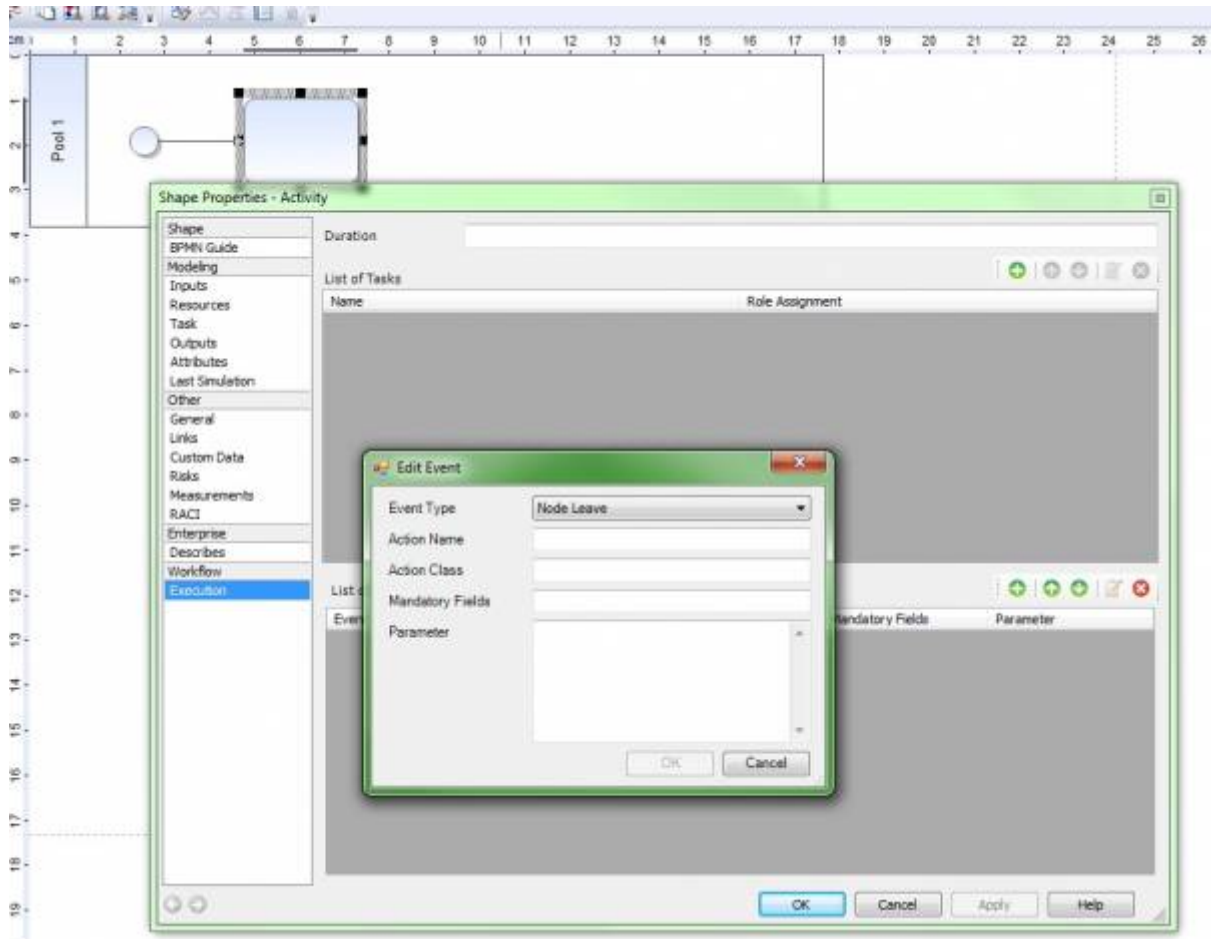
Add-ons of TIM that get assigned a particular task in a process, are called Actionhandlers. They are used, for example, to send e-mails, to generate PDFs or even retrieve e-mails and process them. With TIM, an appropriate handler can be created for any conceivable use. At the end of this page is a list of currently available handlers.

Registering an Actionhandler

Actionhandlers are registered in the modeling in the process properties, e.g. in the right properties panel of [Signavio](#). For this, a [Node](#) is selected and the [Event](#) window is opened. There, the desired Handler can be added and configured.



The same possibility exists in [iGrafx](#) when the properties window of a [Node](#) is opened.



List of Actionhandlers

Actionhandler			
Category	Description	Technical description	From version
Process	Archives an instance	InstanceArchivationHandler	All
Process	Signals main process	signalmainprocessbysoftlinkstate	customer_others
Process	Generates a unique number for the process designation	YearIDGenerator	All
Process	Generates a running number (including date) for the process name	DayIDGenerator	v4.2
Process	Assigns the starter to a swimlane	AssignStarterToSwimlaneHandler	All
Process	Threshold calculation	BorderValueHandler	v3.4.7
Process	Renames the current instance	RenameInstanceHandler	All

Actionhandler			
Category	Description	Technical description	From version
Process	Starts process instance	StartProcessInstanceActionHandler	All
Process	Sets Milestones according to task descriptions	SetMilestonesFromDateFromTaskDescription	v3.6
Process	Recalculates durations for achieving milestones	SimpleMilestonesHandler	v4.3
Process	Prevents duplicate instance names.	PreventDuplicateInstanceNamesHandler	
Process	Assigns a swimlane to an editor based on the open tasks.	AssignmentByLoadHandler	
Process	Sets the manager of a user as editor in a swimlane	AssignSupervisorToTasknodeActionHandler	
Process	Forwards all softlinks that are on a particular node	SignalSoftlinksByWaitstateIdentifier	Customer_Others
Process	Checks whether the Softlink process is still running	WaitForSoftLinkedSubprocessesHandler	
Process	Starts Softlinks from process variables	StartSoftlinksFromProcessVariablesHandler	v3.6
Process	Starts instances from XML data sets	CreateProcessInstanceFromFolderByXML	
Process	Forwards the main process from the sub process	SignalLinkedSuperProcessHandler	
Process	Generates the process instance report and attaches it to the instance	GenerateReportActionHandler	
Process	Runs Sql scripts from within a process	RunSqlScriptHandler	
Subprocesses	Copies process variables into the main process	WriteBackProcessVariableHandler	All
Subprocesses	Copies documents into the main process	WriteBackDocumentHandler	All
Subprocesses	Copies notes into the main process	InheritAttachedBlogsHandler	All

Actionhandler			
Category	Description	Technical description	From version
Subprocesses	Copies documents into the sub process	InheritAttachedDocumentHandler	All
Subprocesses	Copies process variables into the sub process	InheritProcessVariableHandler	All
Escalation	Prepares an escalation mail	MailByProcessVariableHandler	v3.4
Escalation	Prepares a reminder mail	MailReminderHandler	v3.6
Escalation	Generates a process variable during escalation	GenerateEscalationTimeHandler	All
Process variables	Decision by user	HumanDecissionHandler	All
Process variables	Compares date strings and date pattern and creates process variable	CompareDatesAndSetVariable	All
Process variables	Required field check	MandatoryHandler	All
Prozess variables	Sets a required field according to a variable	ConditionalMandatoryHandler	
Process variables	Sets a process variable	ProcessVariableSetter	All
Process variables	Sets the starter through a process variable	SetStarterByProcessVariableHandler	
Process variables	Sets the starter group through a process variable	SetStarterGroupByProcessVariableHandler	
Process variables	Assigns all tasks of a Node to an editor	AssignTasksByVariableHandler	Customer_Others
Process variables	Decision through a process variable	VariableDecisionHandler	All
Process variables	Decision for all XOR-gateways through a process variable	predefinedDecisionHandler	All
Process variables	Decides based on the existence of a variable	VariableExistsDecisionHandler	
Process variables	Assigns a Swimlane to a user	VariableAssignmentActionHandler	All
Process variables	Assigns a Swimlane to multiple users	AssignMultiUserHandler	v4.2
Process variables	Calculates values	ExtendedCalculationHandler	All

Actionhandler			
Category	Description	Technical description	From version
Process variables	Can retrieve a part from a string	ReturnRegexHandler	All
Process variables	Writes the starter in a variable	StartToProcessVariableActionHandler	All
Process variables	Writes a variable from a Softlink into the main process	SetVariableInMainProcess	Customer_Others
Process variables	Writes new or expands existing variable + knows current user	TrackProcessHandler	Customer_Others
Process variables	Sets the executor of a task as process variable	TrackTaskProcessor	v3.6
Process variables	Archives process variables.	VariableArchivationHandler	Customer_Others
Process variables	Creates variables with user data	GenerateIdentityProcessVariablesHandler	
Process variables	Creates absences and substitutes based on process variables	ManageAbsenceHandler	v4.1
Process variables	Saves process variables in a separate table	ProcessVariablesToTableHandler	v4.1
Process variables	Save user information of the user that completed a task to process variables	WriteLastTaskFinisherInVariable	All
Process variables	Makes decisions based on the rules matrix	MatrixHandler	v4.3
Interface	Generic CBS-Actionhandler to request Groovy scripts	CbaGenericHandler	v4.2
Interface	Creates a DOCX or PDF	WordTemplateHandler	All
Interface	Creates a multi-page PDF from the same template	RepeatingWordTemplateHandler	All
Interface	Creates an XML	CreateXMLByProcessVariableActionHandler	
Interface	Sends an HTTP-Request	HTTPRequestHandler	All
Interface	Creates an iCal-date	iCalHandler	v3.5
Interface	Saves all attached documents in the file system	SaveDocsToFileSystem	

Actionhandler			
Category	Description	Technical description	From version
Interface	Creates a CSV File	CSVHandler	
Interface	Compiles multiple PDFs	MergePDFDocumentHandler	
Interface	Moves files	FileArchivationHandler	
Interface	Retrieves a MySQL Function	CallSqlFunction	Customer_Others
General	Can generate Actionhandler in the process	AddActionHandlerToNodes	v3.5
General	Requires expenses as a mandatory field	CheckMandatoryEfforts	v3.5
General	Imports variables, documents and current status of any instances	ImportProcessEntitiesHandler	Customer_Others
General	Checks if documents are attached	MandatoryDocumentHandler	v3.7
Archiving(Customized)		SGO_DateienArchivieren	
Archiving(Customized)		SGO_ReportArchivieren	
Archiving(Customized)		CallAnafeeWebServiceHandler	
Archiving(Customized)		ArchivationWebserviceActionHandler	
Archiving(Customized)		ArchivationWebserviceActionHandlerV2	
Archiving(Customized)		SGO_writeReport2SmartForm	

From: <https://wiki.tim-solutions.de/> - **TIM Wiki** / **NEW TIM 6 Documentation**

Permanent link: <https://wiki.tim-solutions.de/doku.php?id=en:software:tim:actionhandler&rev=1469689572>

Last update: **2021/07/01 09:55**

