

# WordTemplateHandler

## Description

This [handler](#) describe a Word document with variables taken from smartform variables.

The parameter “overwriteExisting” tells if an existing template can be overwritten (true) or a new template should be created.

From [Tim Version 3.7](#) on, the variables from the [VariablesHelper](#) may be used.

The images attached to the instance may be placed into the Word document. For this, special variables must be present in the template.

Individual images may be entered: `$img{Image.jpg}` ← Exact name of the entered imaged

Alternatively, all of the images attached to the instance may be entered: `$img{addAllImages}`

The WordTemplateHandler may also be built into the [Smartform](#) as a button, on order to generate a Template if needed. More on this subject is found [here](#)

---

## Action Class

```
com.dooris.bpm.actionhandler.WordTemplateHandler
```

---

## Event Type

any

## Action Name

any

## Mandatory Fields

-

---

## Parameter

## template

The path to the template is entered here. It may be entered as an absolute or relative to the `Externalfilepath` in the `loom.properties`.

In order to rename the generated PDF, the name of the template itself may contain process variables. (see [Example](#))

### Special case: Resolving process variables in the document name

Given the template parameter has the following value:

**template=\${SYS.PROCESSINSTANCE\_NAME}\_report.docx**. In the target folder the file will be searched accordingly.

1. The `wordTemplateHandler` literally looks for the template **\${SYS.PROCESSINSTANCE\_NAME}\_report.docx**.
2. If it is unable to find the respective document, the process variables in the document name will be resolved.
3. Only now the `wordTemplateHandler` is looking for the template **8D-ProblemSolving\_report.docx** (8D-ProblemSolving is the resolved value of `SYS.PROCESSINSTANCE_NAME`).

This procedure strongly increases the performance of the `wordTemplateHandler`  
Available from version 5.4

### overwriteExisting (optional)

This may be either **true** or **false**. If the name is set to **true**, TIM overwrites the existing PDFs if the process runs again through a loop. If the PDF is still needed, the value must be set to **false**.

This value is set to **false** by default

### documentPrefix

The **documentPrefix** can be used to attach the entered value to the template name of of the PDF as a prefix.

### pdf (optional)

This value must first be set to **true** in order to TIM to generate a PDF. If the value is set to **false** or nothing is entered, TIM replaces the variables in the template and generates a Word file, which is then attached to the process.

### interpretNummbersAsBoolean

If this value is not set by the user, the default is **false**. If the value is set to true, process variables (with names beginning with "bool") are transformed as follows:

Variable name	Value	Result in PDF
<b>baa1</b>	<b>true</b>	<b>true</b>
<b>boolbaa1</b>	<b>true</b>	<b>ja</b>
<b>boolbaa1</b>	<b>1</b>	<b>ja</b>
<b>boolbbb1</b>	<b>false</b>	<b>nein</b>
<b>bobbb1</b>	<b>0</b>	<b>0</b>
<b>boolbbb1</b>	<b>0</b>	<b>nein</b>

### interpretBooleanAsHuman

This is set to **false** by default. If this value is set to true, the values of all of the variables marked as **true** or **false** are replaced with the values **yes** or **no**, respectively.

Available from Version 3.5 on!

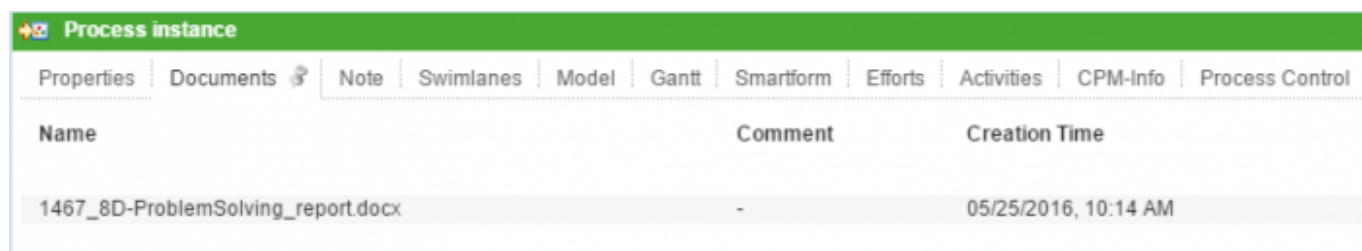
### target

With the **target** parameter you can determine the document name. This approach is useful, if the document name should be different from the template name. The target parameter can contain process variables.

Consider you want to create a report in english and german. The word template in the resource folder has the following name **`${SYS.PROCESSINSTANCE_NAME}_report_${language}`**. With the target parameter you can change the name of the word file to e.g. **`target=XY-Report_DE`**. Therefore you can create word files with different names from the same word template.

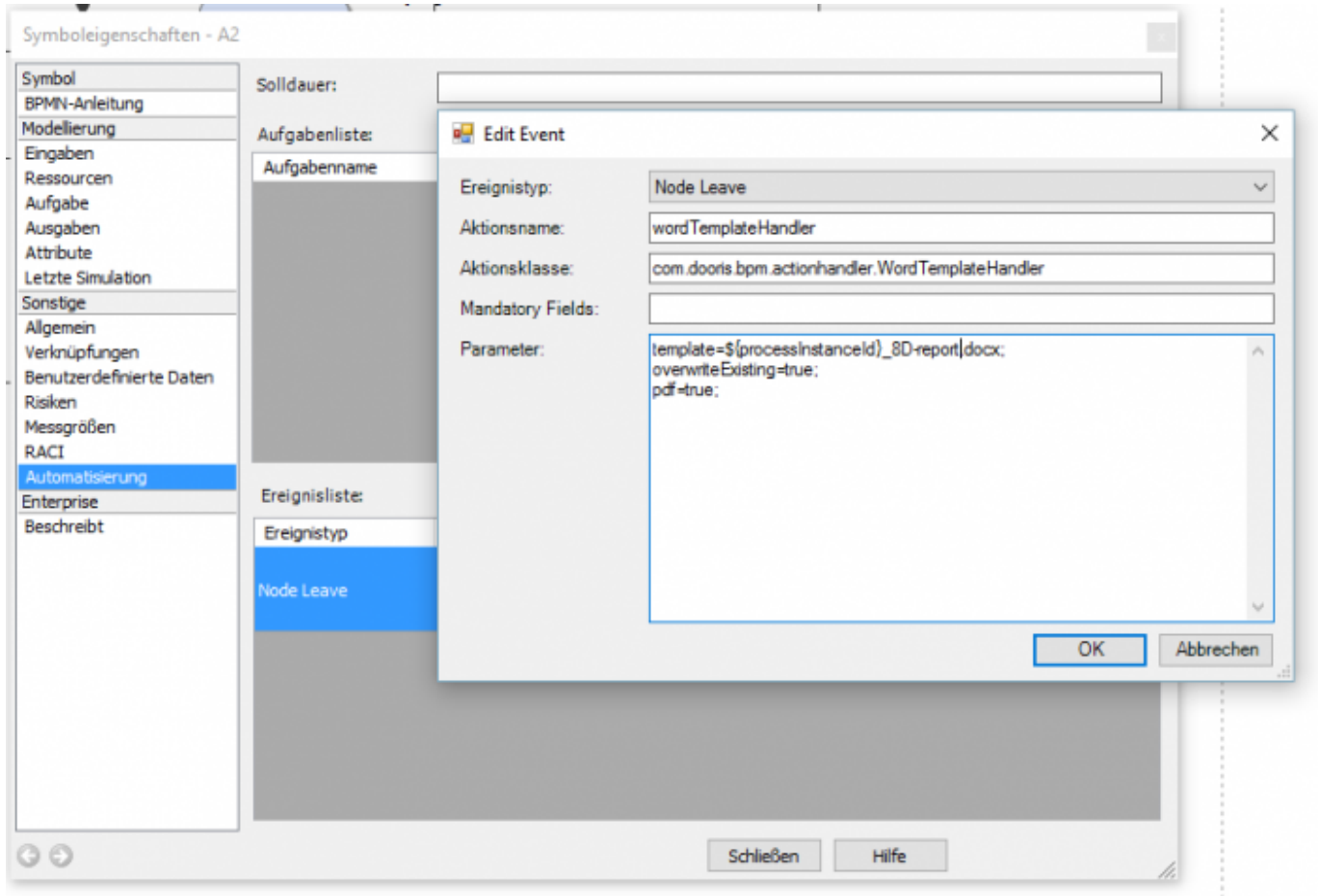
**Important:** no file extension is needed within the target parameter

```
target=${processInstanceId}_${processInstanceName}_report
```



In this instance, the word document is saved as **1467\_8D-ProblemSolving\_report.docx**

## Example



In this example, a PDF is attached after the activation of the wordTemplateHandler. It is composed as follows:

Änderungsabwicklung\_E1\_tim\_123\_test\_1.pdf

## Integrating the Wordtemplatehandler into the Smartform

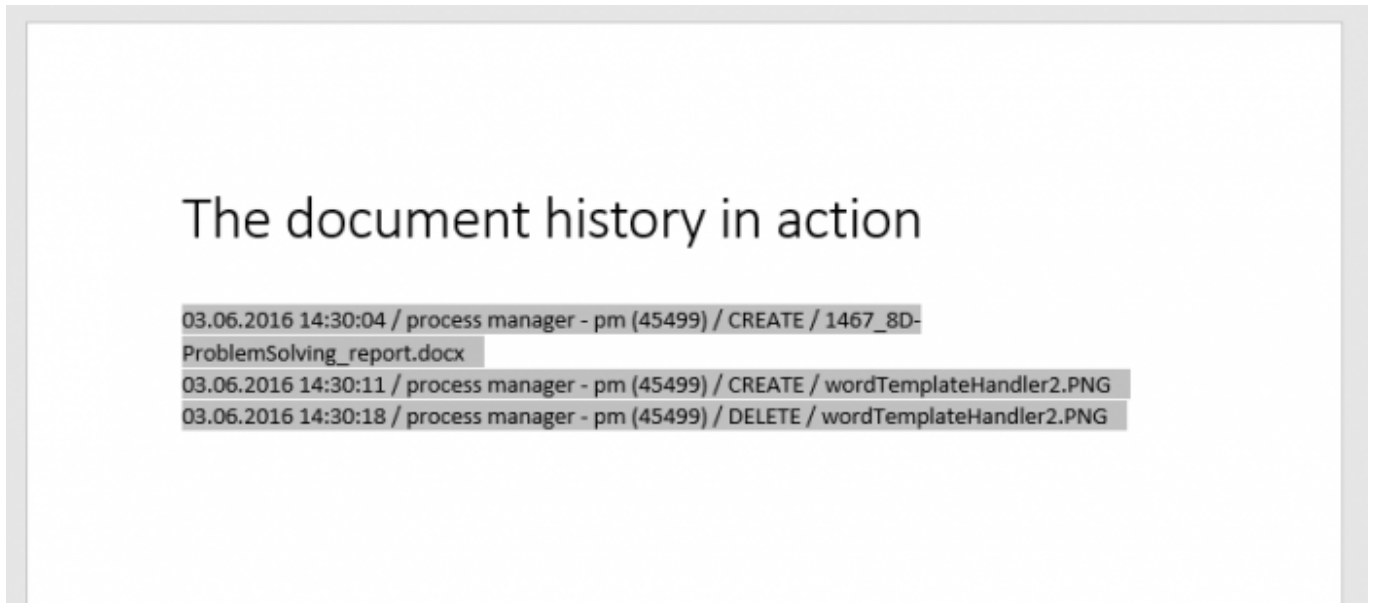
The Wordtemplatehandler can be integrated into the smartform as a link, a button, or an image so that participants can create a template at any time. For this, the following code must be integrated into the smartform:

```
<button type="button"
onbuttonclick="generateFileFromTemplate([ {handler: 'WordTemplateHandler', template: 'pfad/zumTemplate.docx', pdf: false, attach: false, open: true, documentPrefix: 'Prefix' } ])" />
```

Further information can be found on [this page](#).

## Document History

With version 5.2 you can review the document history of a process instance via the system variable **`\${SYS:DOC\_HISTORY}`**. The document history displays which documents have been attached, edited or deleted. E.g. with the **wordTemplateHandler** you can save the document history to a word or pdf document (s. screenshot).



## Text in the Tempate

Normally written text will be inherited, whereas variables, if marked as **`\${Variable ID}`** will be overwritten. The radio-buttons are an exception: You have to use the name instead of the ID.

## Potential problems

### Typical Errors

From: <https://wiki.tim-solutions.de/> - **TIM Wiki** / [NEW TIM 6 Documentation](#)

Permanent link: <https://wiki.tim-solutions.de/doku.php?id=en:software:tim:actionhandler:wordtemplatehandler&rev=1506609373>

Last update: **2021/07/01 09:54**

