

WaitForSoftLinkedSubprocessesHandler

Description

This handler can be used in two different ways.

- As an event on a node it prevents progressing the process / finishing a task if a process, which was started via Softlink, is not finished yet.
- As a decision handler on a XOR gateway it can determine if a Softlink process is finished or not. For that on way has to contain the name **running**, this is the way that will be gone, if the process is not finished. The other way gets the name **finished**, this is the way, which will be gone, if the softlink process is finished.

class

```
com.dooris.bpm.actionhandler.WaitForSoftLinkedSubprocessesHandler
```

Event Type

any

Action Name

any

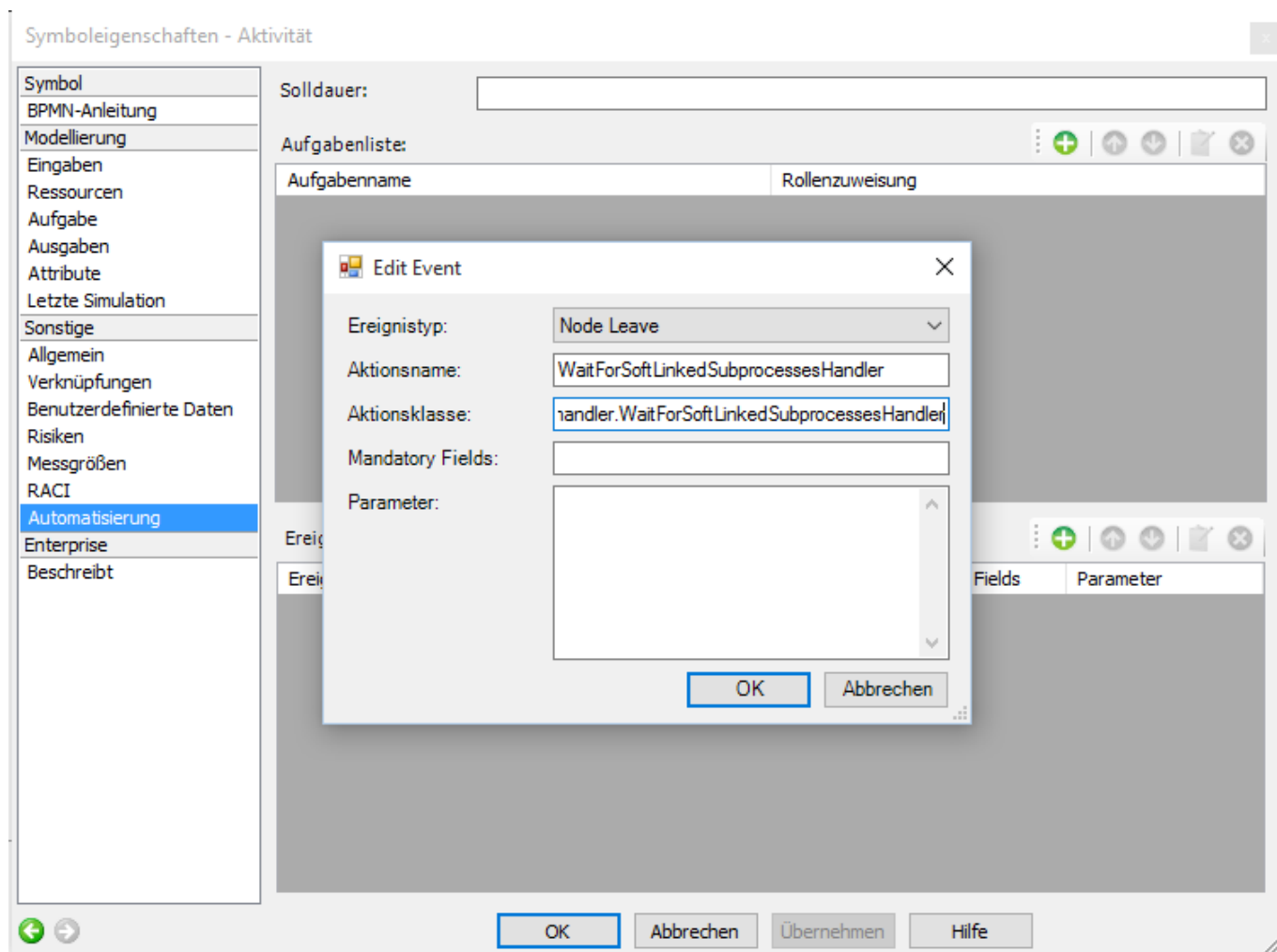
Mandatory Fields

-

Parameter

-

Beispiel als Actionhandler



Beispiel als DecisionHandler

Eigenschaften (Exklusives Gateway)	
Attribut	Wert
Hauptattribute	
Name	Entscheidung anhand Softlink Prozess
Handler Class	com.dooris.bpm.actionhandler.WaitForSoftLinkedSubprocessesHandler
Handler Variables	
Hintergrundfarbe	<input type="checkbox"/>
Weitere Attribute	
Element ID	sid-4EC7BDBE-0156-49FA-A783-4C7AC2D243B8

Beispiel für die "finished"-Transition

Die Transition für **running** kann equivalent erstellt werden, nur der Technisch Eindeutige Name muss auf **running** geändert werden.

Eigenschaften (Sequenzfluss) >>	
Attribut	Wert
Hauptattribute	
Bedingungstyp	None
Bedingungsausdruck	Beliebig
Zeige-Diamanten	
Technisch Eindeutiger Name	finished
Weitere Attribute	

From: <https://wiki.tim-solutions.de/> - **TIM Wiki** / [NEW TIM 6 Documentation](#)

Permanent link: <https://wiki.tim-solutions.de/doku.php?id=en:software:tim:actionhandler:waitforsoftlinkedsubprocesseshandler&rev=1522159926>

Last update: **2021/07/01 09:54**

