

# StartProcessInstanceActionHandler

## Description

This [handler](#) uses one instance in order to generate an additional, independent instance. The original instance continues to run without restriction.

---

## Action Class

```
com.dooris.bpm.actionhandler.StartProcessInstanceActionHandler
```

---

## Event Type

any type

## Action Name

any name

## Mandatory Fields

-

## Parameter

**name**

If the parameter `giveProcessVairables` is set to `false`, the to be started `processdefinition` will be searched based on this parameter.

A `processvariable` needs to be handed over to this parameter.

**defaultValue**

If the parameter `giveProcessVairables` is set to `false`, the to be started `processdefinition` will be searched based on this parameter, if nothing is found with the parameter name.

If the parameter giveProcessVairables is set to true, this parameter determines the name of the newly created instance.

### prefixInstanceName

Is inserted before the name of the newly created instance as a prefix.

If the parameter giveProcessVairables is set to true, this parameter will be ignored.

### giveProcessVariables

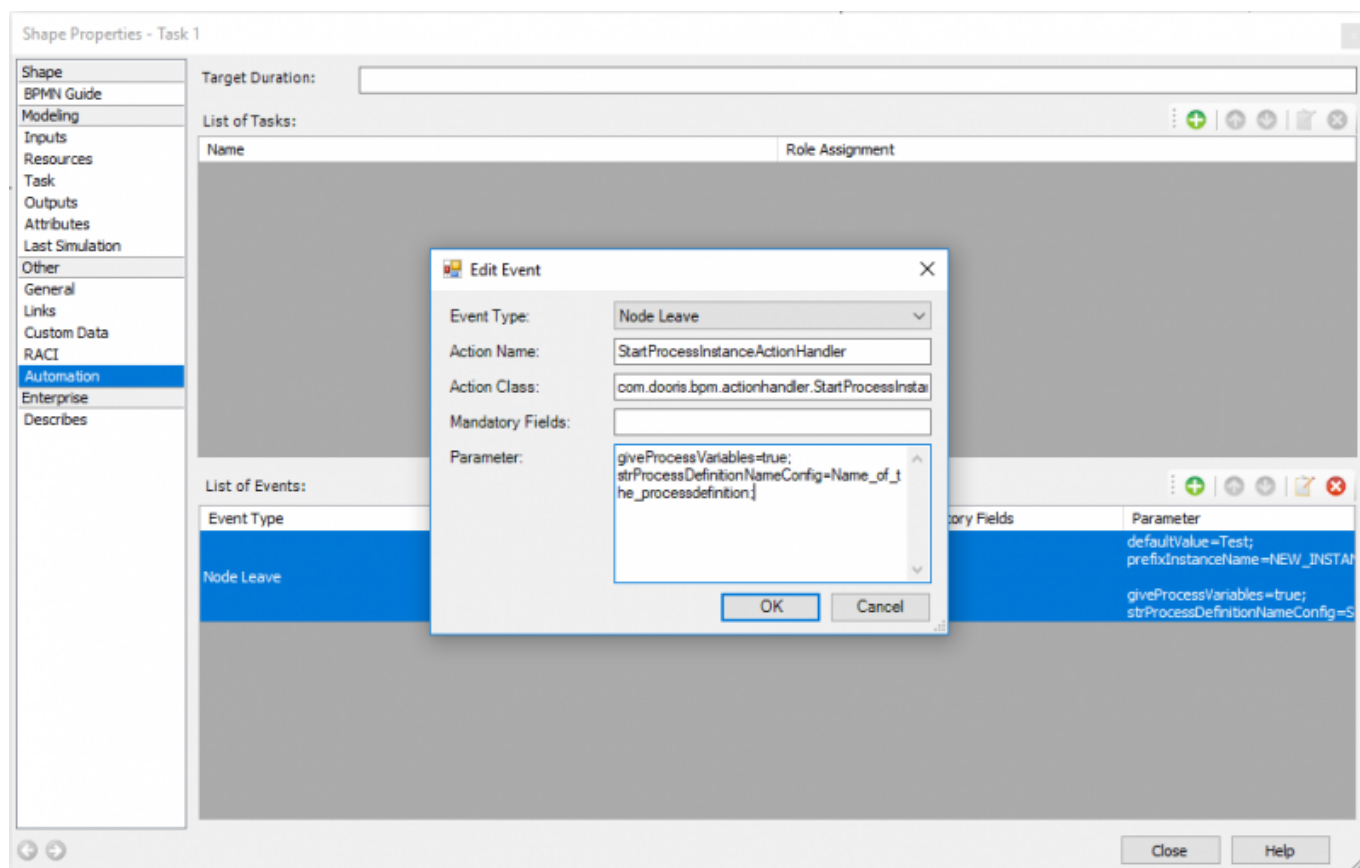
If this parameter is set to true, the processvariables will be handed over to the newly created instance.

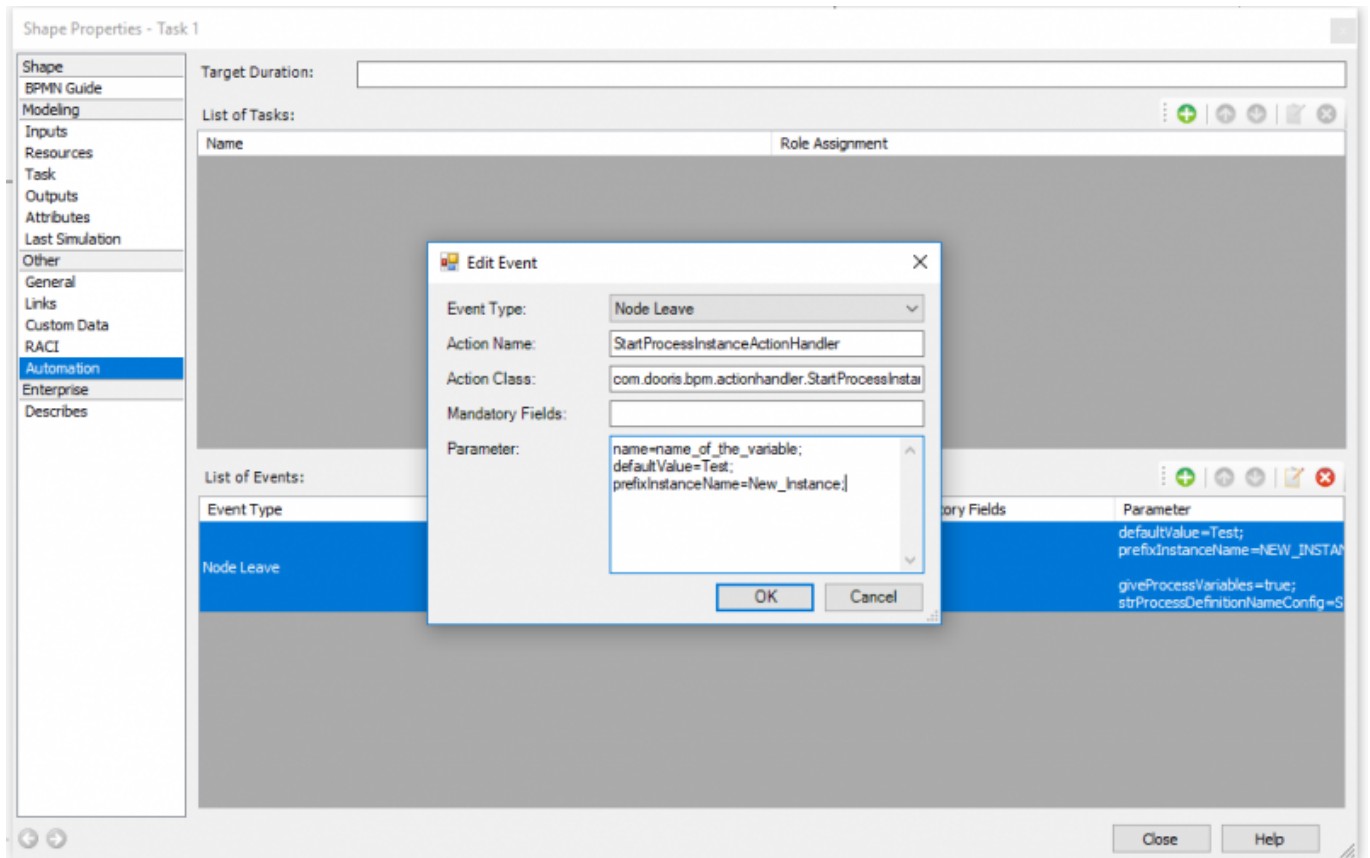
Default is false.

### strProcessDefinitionNameConfig

If the parameter giveProcessVairables is set to true, the to be started procesdefinition will be searched based on this parameter.

## example





From: <https://wiki.tim-solutions.de/> - **TIM Wiki** / **NEW TIM 6 Documentation**

Permanent link: <https://wiki.tim-solutions.de/doku.php?id=en:software:tim:actionhandler:startprocessinstanceactionhandler&rev=1507546470>

Last update: 2021/07/01 09:54

