

---

## Description

This handler merges all PDF documents attached to a process instance into one document and removes the original documents. Forms are deactivated before the merging process and converted into normal, plain, non-editable PDFs. The entries in the saved content fields of the forms are passed to the final PDF as normal text.

---

## Action Class

```
com.dooris.bpm.actionhandler.MergePDFDocumentHandler
```

---

## Event Type

any

## Action Name

any

## Mandatory Fields

-

---

## Parameter

### **mergeDocumentName**

Contains the name of the newly-generated, compiled documents (This parameter is mandatory).

### **addTimestampToDescription**

Inserts a time stamp for the document (may be true or false, standard is true)

### **overwriteExisting**

Should an existing document with the same name as the generated document be overwritten? (true or false, the standard is false)

If set to false, all currently-attached PDF files will be merged (including those that have already been merged). If the document that has already been merged should not be merged again, the parameter `excludedDocuments` can be used.

If set to true, all currently-attached PDF files that have not already been merged will be merged. Documents that have already been merged will not be merged again.

### **sortDocuments**

Should the order in the new documents be determined on the basis of the names of the documents to be edited? (true or false, the standard is false)

If set to false, the documents will be attached in accordance with the date of creation; the oldest document will come at the very beginning.

### **excludedDocuments**

Are there documents that should be excluded from merging?

i.e.: `excludedDocuments=Offer;` (all documents with "Offer" in the file name are excluded from the merging process)

### **sortChronological**

This parameter is only considered if the parameter `sortDocuments` is set to false. If `sortChronological` is set to true, the oldest and newest documents will be inserted at the very beginning and end of the document, respectively. If `sortChronological` is set to false, the situation is reversed and the newest and oldest documents will be inserted at the very beginning and end of the document, respectively.

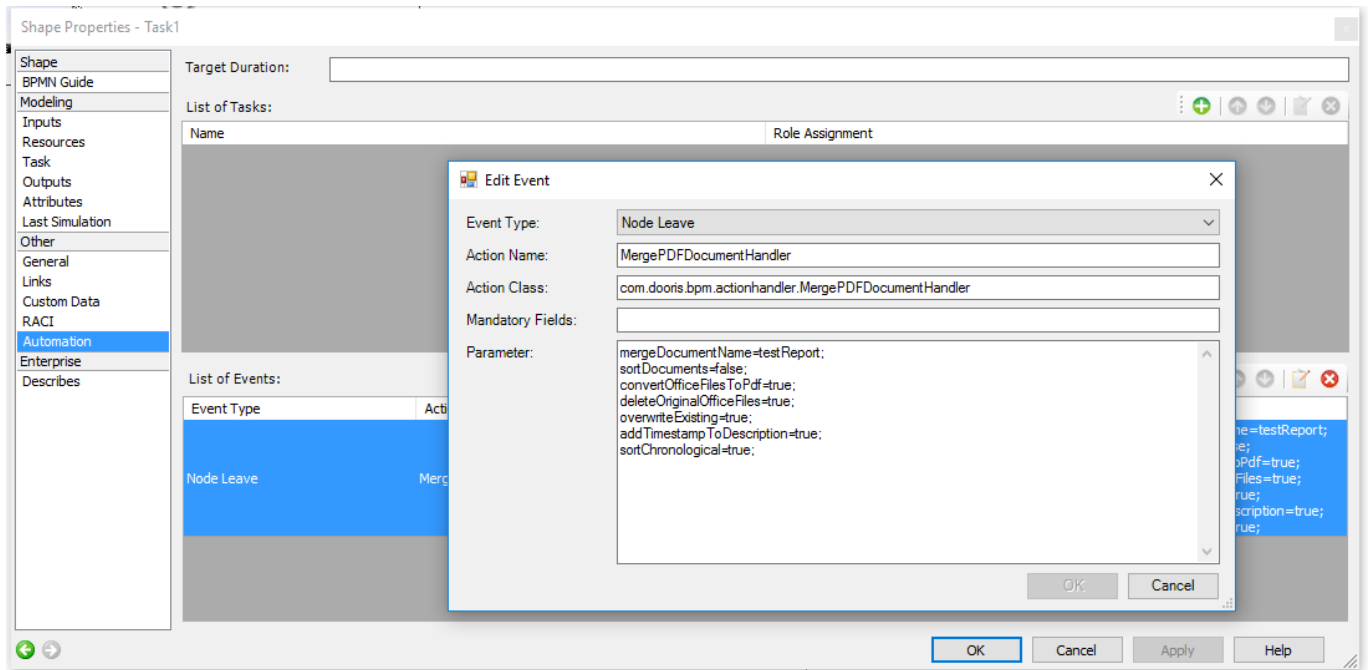
### **convertOfficeFilesToPdf**

Should attached .docx-, .pptx- and .xlsx-files be converted to PDFs, and as such be included in the merging process? (true or false, this parameter is optional and the standard is false)

### deleteOriginalOfficeFiles

Should converted .docx-, .pptx- und .xlsx-files be deleted? (true or false, this parameter if optional and the standard is false)

### Example



From: <https://wiki.tim-solutions.de/> - **TIM Wiki** / **NEW TIM 6 Documentation**

Permanent link: <https://wiki.tim-solutions.de/doku.php?id=en:software:tim:actionhandler:mergepdfdocumenthandler>

Last update: **2021/07/01 09:52**

