

 **This page is not fully translated, yet. Please help completing the translation.**
(remove this paragraph once the translation is finished)

MandatoryDocumentHandler

Checks if one or more document(s) with one or multiple supplied file names exist, or alternatively, if any documents exist.

If the search yields no results, an error message appears and the process instance can only continue once the required document(s) are attached.

Action Class

```
com.dooris.bpm.actionhandler.MandatoryDocumentHandler
```

Event Type

any

Action Name

any

Mandatory Fields

none

Parameter

Parameter 1

pattern

A character string, in which the document name or description must be present. One or multiple patterns may be entered (multiple terms being separated by commas).

i.e.:

- pattern=PhoneNumberList;
- pattern=PhoneNumberList,docx,TravelCosts;

» **Attention!** If a pattern is not given, a check is run to make sure that at least one document (regardless of how it is named) is attached!
(see [example](#))

Parameter 2

description

Denotes if a description of the document should be checked according to the supplied pattern. Possible values for this are true (include) or false (do not include). This is set to true by default.

i.e.:

- description=false;

Explanation (see [example](#))

Parameter 3

caseSensitive

Denotes if upper- and lower-case formatting should be considered. This parameter is only taken into account if there is a pattern specified!

Possible values for this are true (pay attention to upper- and lower-case formatting) or false (ignore). This is set to false by default.

i.e.:

- caseSensitive=false;

(see [example](#))

Parameter 4

fileType

Declaration of file endings (separated by commas). Checks if all documents conform to the file ending, no matter if upper- or lower-case (example: given fileType=pdf both .pdf and .PDF are valid). If only this parameter is supplied, the uploading of documents is not mandatory. However, if these are attached, they must conform to the file endings.

i.e.:

- fileType=pdf,docx,pptx

Parameter 5

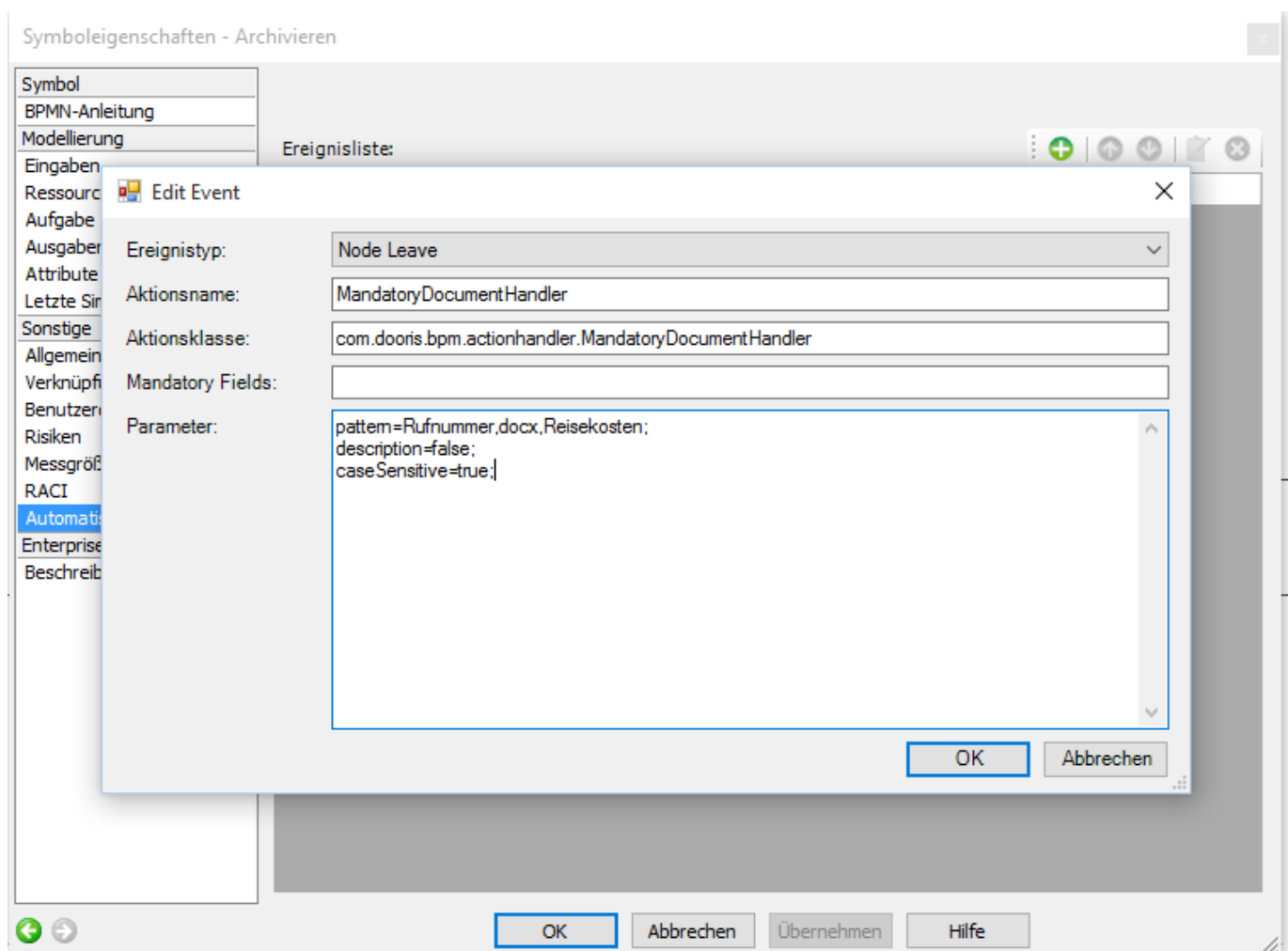
enforcePattern

If set to "true", all of the attached documents must conform to the aforementioned pattern (Parameter 1). If "false", only one file must conform to the pattern. Possible values for this are "true" or "false"

i.e.:

- enforcePattern=true

Example



Attention! If the check should only determine if a document is attached, the action handler will be executed without the parameter!

Dependencies

Available from TIM-Version **3.8** on.

From:
<https://wiki.tim-solutions.de/> - **TIM Wiki** / [NEW TIM 6 Documentation](#)

Permanent link:
<https://wiki.tim-solutions.de/doku.php?id=en:software:tim:actionhandler:mandatorydocumenthandler&rev=1480410760>

Last update: **2021/07/01 09:54**

