

# BorderValueHandler

## Description

This [handler](#) compares the value of a [process variable](#) with the border value passed to it and sets a new [process variable](#). This will be used later in the process with the help of the [VariableDecisionHandler](#) to send [the process](#) in the right direction.

---

## Action Class

```
com.dooris.bpm.actionhandler.BorderValueHandler
```

---

## Event Type

any type

## Action Name

any name

## Mandatory Fields

-

---

## Parameter

### **variableName**

Name of the variable to which amount being assessed belongs. (see [Example](#))

### **borders**

This indicates the threshold values, with which the figure will be matched as well as the potential content of the new [process variable](#)(separated by spaces and question mark).

The transitions based on the [VariableDecisionHandler](#) require technical, unique names that reflect the potential content (see [Example](#))

### decisionName

Name of the new process variable that can guide the process with the [VariableDecisionHandler](#) in the right direction (see [Example](#)).

### Important!

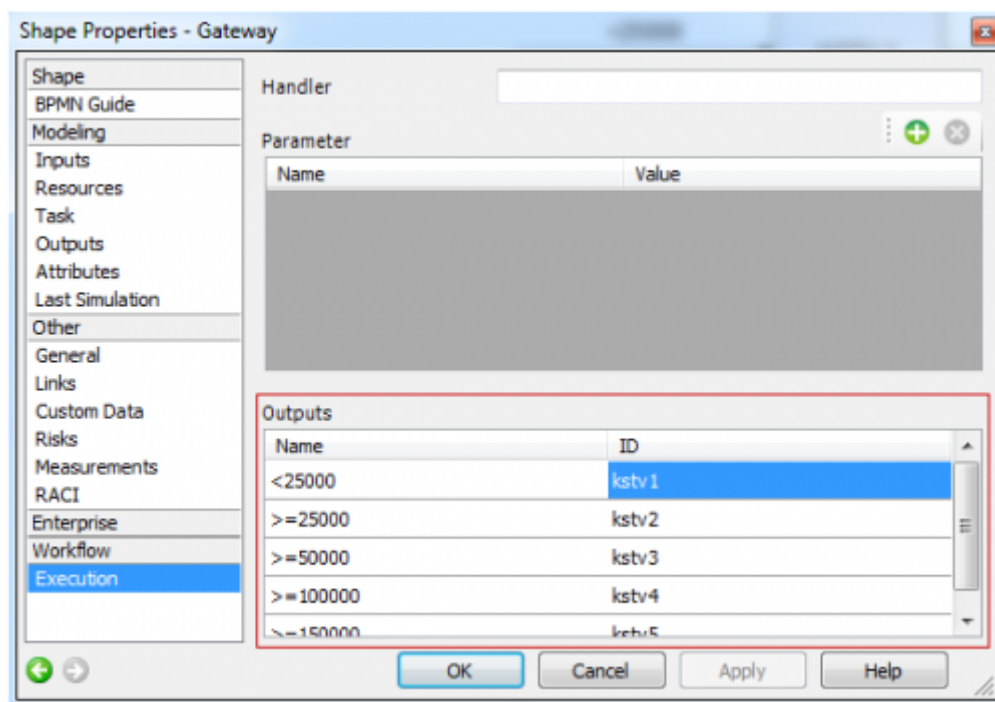
Coding the threshold value sign:

```
> --> GT
< --> LT
>= --> GTEQUALS
<= --> LTEQUALS
```

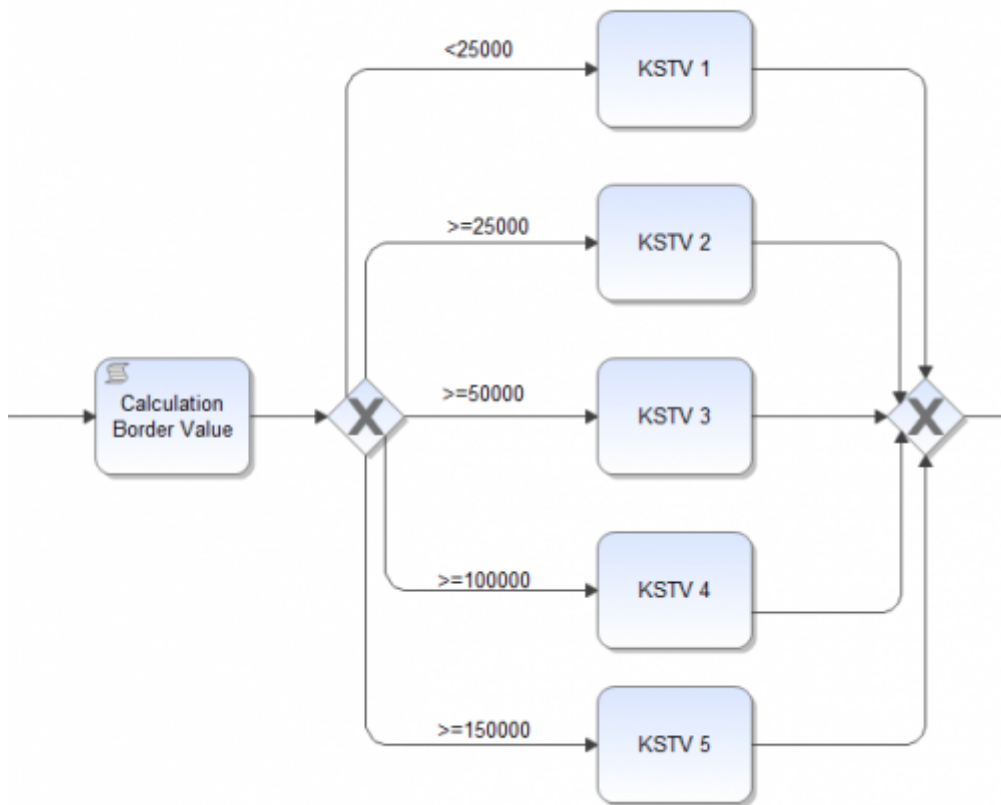
### Example

borders=LT 25000 kstv1?GTEQUALS 25000 kstv2?GTEQUALS 50000 kstv3?GTEQUALS 100000 kstv4?GTEQUALS 150000 kstv5

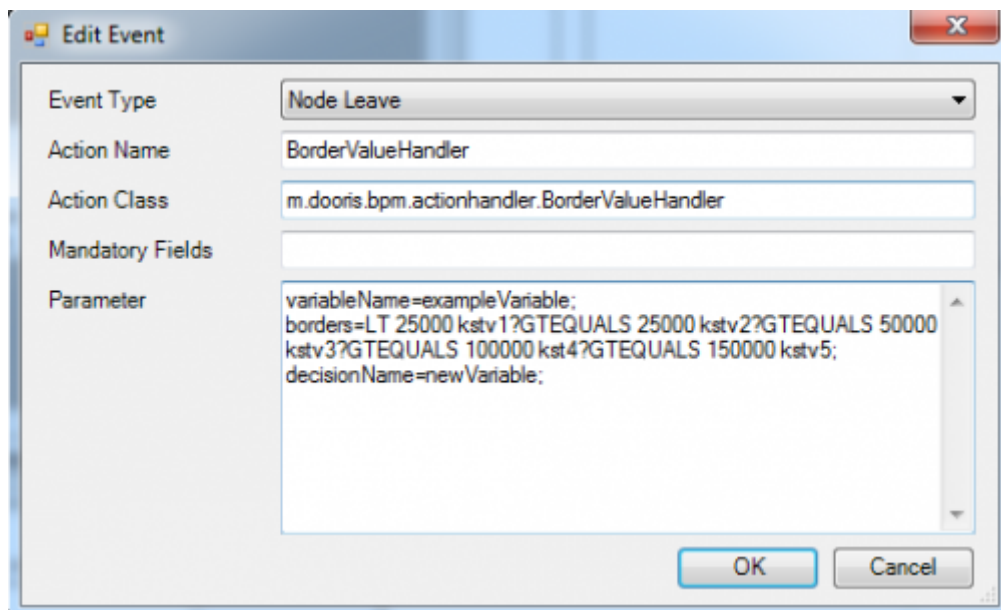
[Transition Name:](#)



[Example Process:](#)



Example Parameter:



From: <https://wiki.tim-solutions.de/> - TIM Wiki / [NEW TIM 6 Documentation](#)

Permanent link: <https://wiki.tim-solutions.de/doku.php?id=en:software:tim:actionhandler:bordervaluehandler&rev=1452780365>

Last update: 2021/07/01 09:54

