

 **This page is not fully translated, yet. Please help completing the translation.**  
(remove this paragraph once the translation is finished)

# BorderValueHandler

## Description

This [handler](#) vergleicht den Wert einer [Prozessvariable](#) mit ihm übergebenen Schwellwerten und setzt eine neue [Prozessvariable](#). The [handler](#) compares the value of a [process variable](#) with the border value passed to it and sets a new [process variable](#).

---

## Action Class

```
com.dooris.bpm.actionhandler.BorderValueHandler
```

---

## Event Type

any type

## Action Name

any name

## Mandatory Fields

-

---

## Parameter

### variableName

Name of the variable in which to be assessed amount contains. (see [Example](#))

## borders

The borders values with which the amount will be matched and the potential content of the new [process variable](#).(separated by spaces and question mark)

The outgoing transitions from the [VariableDecisionHandler](#) must need the ID equivalent to the potential contents. (see [Example](#))

## decisionName

Name of the new process variable which can guide the process with the [VariableDecisionHandler](#) in the right direction (see [Example](#)).

### Important!

Coding the border value sign:

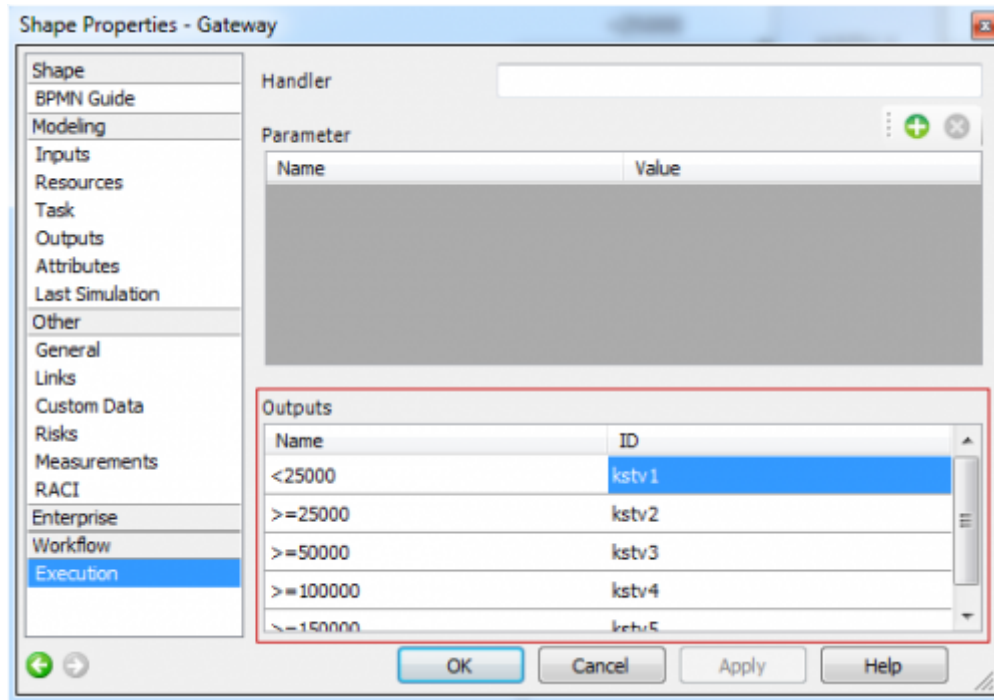
```
> --> GT
< --> LT
>= --> GTEQUALS
<= --> LTEQUALS
```

---

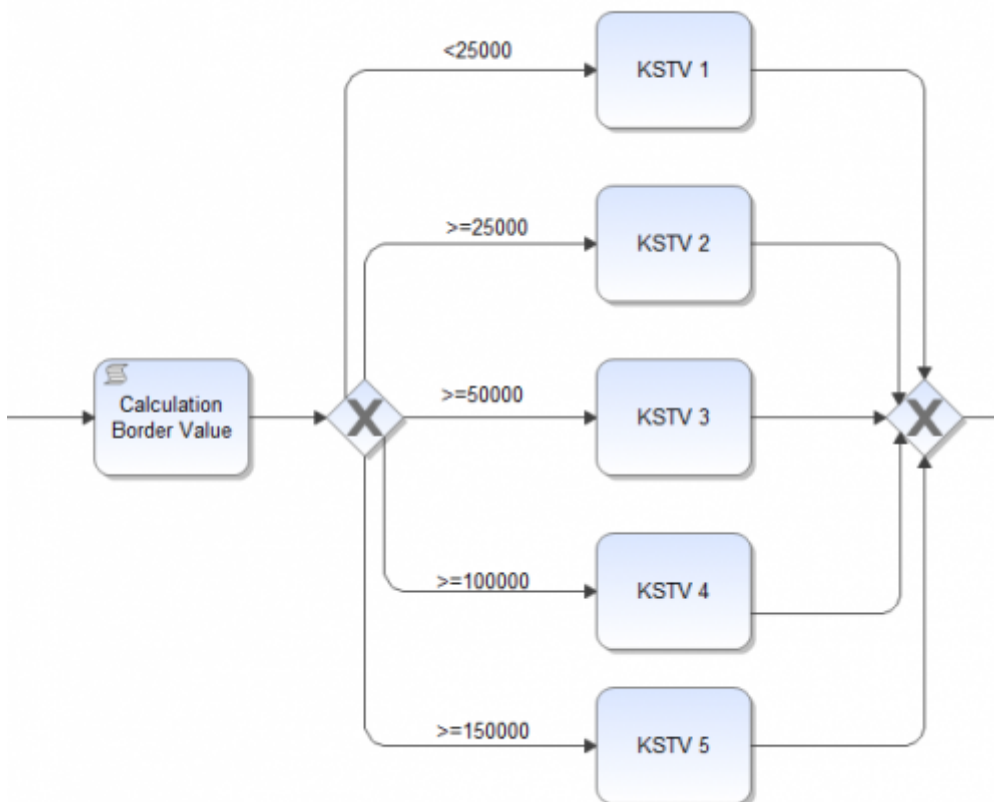
## Example

```
borders=LT 25000 kstv1?GTEQUALS 25000 kstv2?GTEQUALS 50000 kstv3?GTEQUALS 100000
kst4?GTEQUALS 150000 kstv5
```

[Transition Name:](#)



Example Process:



Example Parameter:

**Edit Event**

Event Type: Node Leave

Action Name: BorderValueHandler

Action Class: m.dooris.bpm.actionhandler.BorderValueHandler

Mandatory Fields:

Parameter:  
variableName=exampleVariable;  
borders=LT 25000 kstv1?GTEQUALS 25000 kstv2?GTEQUALS 50000  
kstv3?GTEQUALS 100000 kst4?GTEQUALS 150000 kstv5;  
decisionName=newVariable;

OK Cancel

From: <https://wiki.tim-solutions.de/> - **TIM Wiki** / [NEW TIM 6 Documentation](#)

Permanent link: <https://wiki.tim-solutions.de/doku.php?id=en:software:tim:actionhandler:bordervaluehandler&rev=1417786303>

Last update: **2021/07/01 09:54**

