 **This page is not fully translated, yet. Please help completing the translation.**
(remove this paragraph once the translation is finished)

AssignmentByLoadHandler

Description

This handler designates one user from a group as the responsible person for a swim lane. The user is selected based on how many open tasks, which need to be completed, are assigned to him/her. The user with the lowest number of open tasks is entered as the person responsible for the swimlane.

Action Class

```
com.dooris.bpm.actionhandler.AssignmentByLoadHandler
```

Event Type

any

Action Name

any

Mandatory Fields

none

Parameter

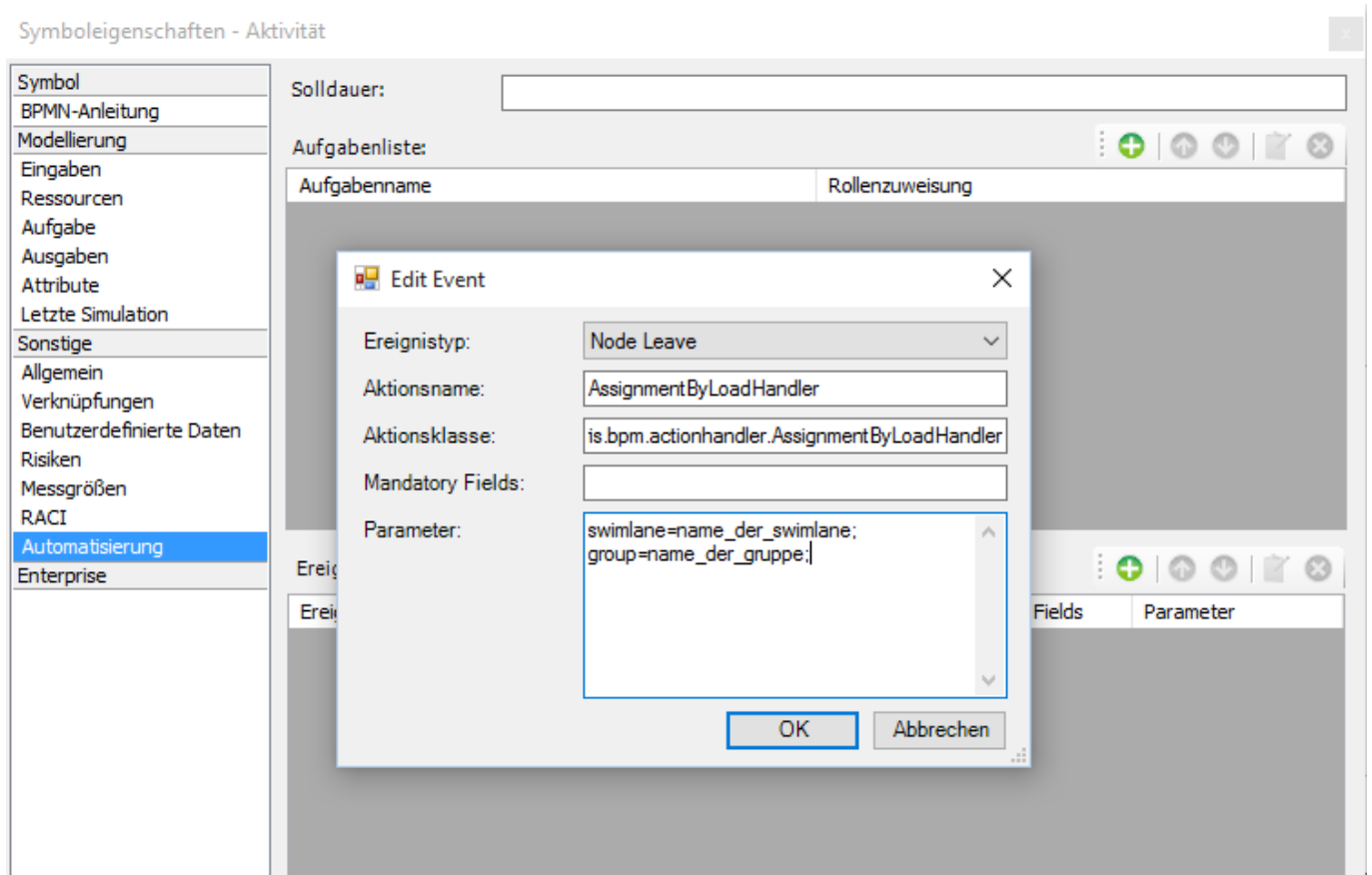
swimlane

The name of the swim lane, to which the user should be assigned, is entered here.

group

This contains the name of the group in which the users are compared based on the open assignments: this is also the group from which the responsible person is selected.

Example



From: <https://wiki.tim-solutions.de/> - **TIM Wiki** / **NEW TIM 6 Documentation**

Permanent link: <https://wiki.tim-solutions.de/doku.php?id=en:software:tim:actionhandler:assignmentbyloadhandler>

Last update: 2021/07/01 09:52

