 **This page is not fully translated, yet. Please help completing the translation.**  
(remove this paragraph once the translation is finished)

# AddActionHandlerToNodes

## Description

This action handler can add the given action handler to every **task** and set it to be executed if certain events occur.

---

## Action Class

```
com.dooris.bpm.actionhandler.AddActionHandlerToNodes
```

---

## Event Type

any

## Action Name

any

## Mandatory Fields

Parameter of the action handler being called.

---

## Parameter

### actionName

The displayed name of the action handler being added to the tasks.

## actionClass

The action class of the action handler being added (see [example](#)).

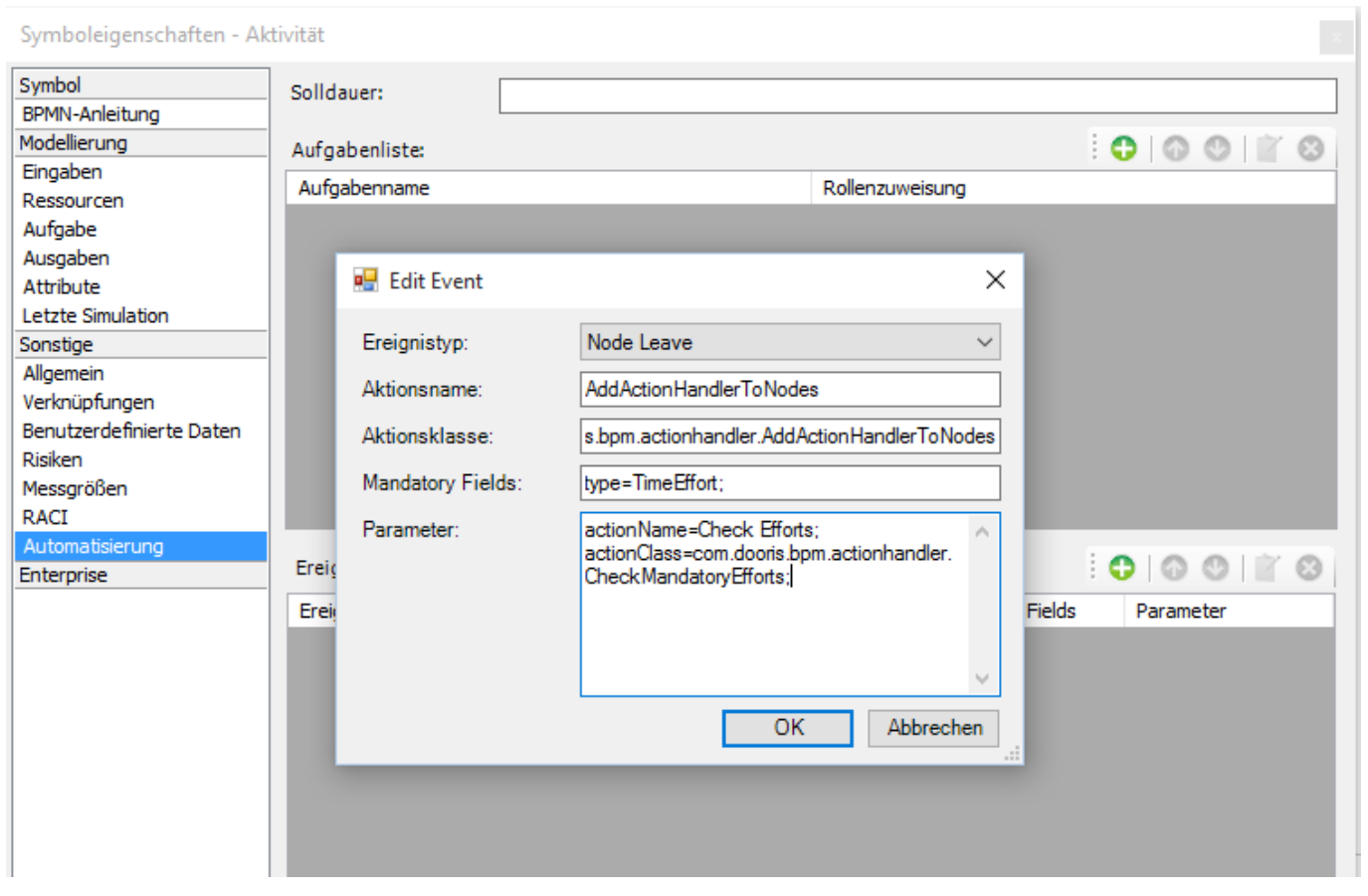
## eventType

Set to **task-end** by default; however, it may be set to any of the following parameters:

- before-signal
- after-signal
- process-start
- process-end
- node-enter
- node-leave
- superstate-enter
- superstate-leave
- subprocess-created
- subprocess-end
- task-create
- task-assign
- task-start
- task-end
- timer

---

## Example



## Dependencies

TIM Version : [v3.5](#)

From: <https://wiki.tim-solutions.de/> - [TIM Wiki](#) / [NEW TIM 6 Documentation](#)

Permanent link: <https://wiki.tim-solutions.de/doku.php?id=en:software:tim:actionhandler:addactionhandlertonodes&rev=1492075782>

Last update: **2021/07/01 09:54**

