 **This page is not fully translated, yet. Please help completing the translation.**
(remove this paragraph once the translation is finished)

AddActionHandlerToNodes

Description

This action handler can add the given action handler to every **task** and set it to be executed if certain events occur.

Action Class

```
com.dooris.bpm.actionhandler.AddActionHandlerToNodes
```

Event Type

any

Action Name

any

Mandatory Fields

Parameter of the action handler being called.

Parameter

actionName

The displayed name of the action handler being added to the tasks.

actionClass

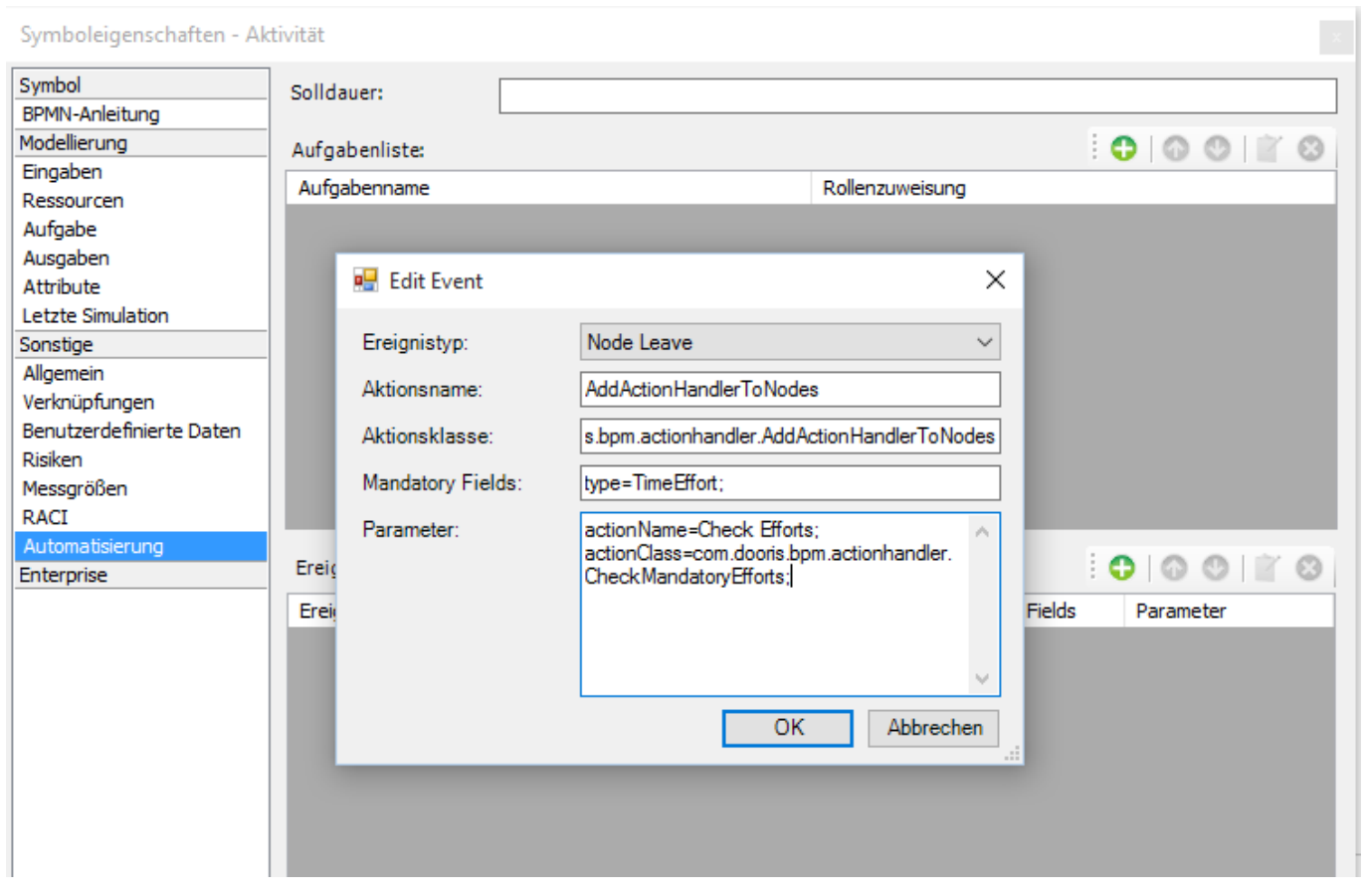
The action class of the action handler being added (see [example](#)).

eventType

Set to **task-end** by default; however, it may be set to any of the following parameters:

- before-signal
- after-signal
- process-start
- process-end
- node-enter
- node-leave
- superstate-enter
- superstate-leave
- subprocess-created
- subprocess-end
- task-create
- task-assign
- task-start
- task-end
- timer

Example



Dependencies

TIM Version : [v3.5](#)

From: <https://wiki.tim-solutions.de/> - [TIM Wiki](#) / [NEW TIM 6 Documentation](#)

Permanent link: <https://wiki.tim-solutions.de/doku.php?id=en:software:tim:actionhandler:addactionhandlertonodes>

Last update: **2021/07/01 09:52**

