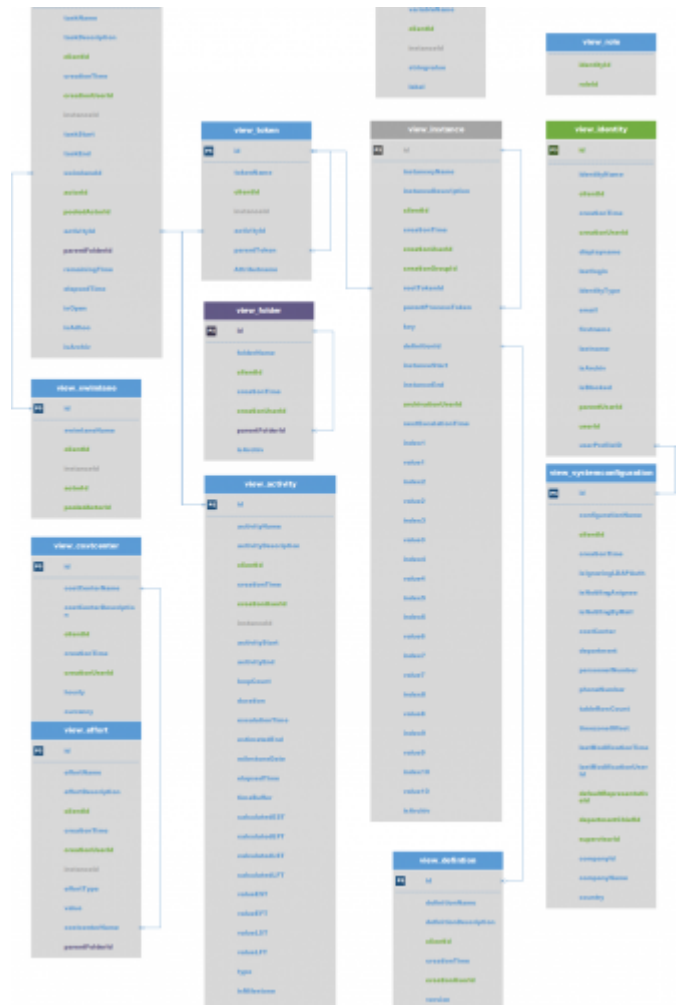


Conditions for an evaluation

Evaluations are defined by SQL statements. Therefore only the following predefined [database views](#) can be used.

Explanation of the table contents



- **id** always contains the so called primary key and is a unique number in the table
- **instanceId** contains the primary key of the process instance that belongs to the object/entry
- **<placeholder>Name** contains the object's name
- **<placeholder>Description** contains the object's description
- **<placeholder>Start** represents the time when the process got active on this object. A task can be e.g. be created earlier but started later.
- **<placeholder>End** represents the time when the process left the object.
- **creationTime** is the creation time of the entry
- **creationUserId** contains the primary key (see id) of the user that created this entry
- **is<Placeholder>** beinhaltet immer ein Wahr/Falsch Wert always contains a false/true value
- **isArchiv** states if the process was already archived or not

view_activity

- **id**
- **activityName**
- **activityDescription**
- **clientId**
- **creationTime**
- **creationUserId**
- **instanceId**
- **activityStart**
- **activityEnd**
- **loopCount**: If the process runs through the activity more than one time (Loops) the runs are saved here
- **duration**: contains the maximum and modelling processing time of the activity
- **escalationTime**: calculated time of the next escalation of the activity
- **estimatedEnd**: contains the expected end date of the activity
- **mileStoneDate**: time when the milestone should be reached
- **elapsedTime**: contains the elapsed time for processing the activity
- **timeBuffer**: calculated buffer for the activity
- **calculatedEST**: [calculated earliest start](#)
- **calculatedEFT**: [calculated earliest end](#)
- **calculatedLST**: [calculated latest start](#)
- **calculatedLFT**: [calculated latest end](#)
- **valueEST**: pure time display of [earliest start](#) (contains [Business Calender](#))
- **valueEFT**: pure time display of [earliest end](#) (contains [Business Calender](#))
- **valueLST**: pure time display of [latest start](#) (contains [Business Calender](#))
- **valueLFT**: pure time display of [latest end](#) (contains [Business Calender](#))
- **activityType**: gives back the kind of activity (ScriptNode, Tasknode, Mailnode,...)
- **isMilestone**: states if the activity is a milestone or not
- **inTime**: states if the activity is still in schedule/timetable

view_definition

- **id**:
- **definitionName**:
- **definitionDescription**
- **clientId**:
- **creationTime**:
- **creationUserId**:
- **version**: version in which the process definition exists
- **escalationStatus**: information on the escalation status of the process
- **owner**: process owner
- **starter**: user or group who is allowed to start the definition
- **deployer**: user or group who is allowed to deploy the definition
- **isArchiv**: states if the definition is archived or not

view_effort

- **id:**
- **effortName:**
- **effortDescription**
- **clientId:**
- **creationTime:**
- **creationUserId:**
- **instanceId:**
- **effortType:** kind of effort (time or money)
- **effortValue:** value of the effort without unit
- **timeValue:** contains the time effort
- **financeValue** contains the financial effort and takes into account the cost center at the moment of capture
- **costcenterName:** contains the cost center on which the effort was booked
- **currency:** contains the currency with which the effort was booked in the moment of capture
- **hourlyRate** contains the hourly rate of the cost center at the moment of capture
- **parentFolderId:** contains the primary key of the corresponding folder

view_identity

- **id:**
- **identityName:**
- **clientId:**
- **creationTime:**
- **creationUserId:**
- **displayName:** contains the full name and username (e.g. **Max Mustermann (M.Muster)**)
- **lastLogin:** contains the time at which the user last logged in
- **identityType:** type of identity/user can have the following values 'USER', 'GROUP', 'MEMBERSHIP', 'ROLE' or 'CLIENT'
- **email:** e-mail address of the user or group
- **firstname:** user's first name
- **lastname:** user's last name
- **parentUserId:** contains the primary key which points to the group that belongs to this membership
- **userID :** contains the primary key which points to the user that belongs to this membership (only affects identityType 'MEMBERSHIP')
- **userProfileId:** Enthält den Primärschlüssel, der das Benutzerprofil beinhaltet contains the primary key which points to the userprofile
- **isBlocked:** states if this user/group/client is blocked or not
- **isArchiv:** states if this user/group/client is archived or not

view_instance

- **id:**
- **instanceName:**
- **instanceDescription:**
- **clientId:**
- **creationTime:**
- **creationUserId:**
- **creationGroupid** contains the primary key of the group that started the process

- **rootTokenId**: contains the primary key of the current token which points to the current activity
- **parentProcessToken**: contains the primary key which points to the corresponding main process
- **instanceKey**: contains the generated value of the [YearIDGenerator](#), if it is used
- **definitionId**: contains the number that points to the processdefinition, which underlies this instance
- **definitionName**: the name of the underlying processdefinition
- **instanceStart**:
- **instanceEnd**:
- **archivationUserId** : contains the primary key which points to the user, who archived this instance
- **archivationTime**: time at which the processinstance was archived
- **nextEscalationTime**: contains the calculated time of the next escalation of the process
- **index1-10 und value1-10**: all index names and values which are declared as indexvalues in the process
- **isInTime**: states if the process is still on schedule or if milestones/processing time are not possible anymore
- **isArchiv**: states if the process instance is archived or not

view_swimlane

- **id**:
- **swimlaneName**:
- **clientId**:
- **instanceId**: contains the primary key that points to the corresponding instance
- **actorId**: contains the primary key that points to the currently corresponding user
- **pooledActorId**: contains the primary key which points to the corresponding group

view_task

- **id**:
- **taskName**:
- **taskDescription**:
- **clientId**:
- **creationTime**:
- **creationUserId**:
- **instanceId**:
- **taskStart**:
- **taskEnd**:
- **actorId**: contains the primary key that points to the currently corresponding user
- **pooledActorId**: contains the primary key that points to the currently corresponding group
- **activityId**: contains the primary key that points to the superordinate activity
- **parentFolderId**: contains the primary key that points to the corresponding folder
- **swimlaneId**: contains the primary key that points to the swimlane in which the task lies
- **remainingTime**: contains the remaining processing time of this task
- **elapsedTime**: contains the elapsed processing time
- **isOpen**: states if the task is finished already (Attention! signalling methods don't always finish tasks)

- **isAdhoc**: states if this task was created as an [AdHoc-task](#) or not
- **isArchiv**:

view_token

- **id**:
- **tokenName**:
- **clientId**:
- **instanceId**: contains the primary key which points to the corresponding instance
- **activityId**: contains the primary key which points to the corresponding activity
- **parentTokenId**: contains the primary key which points to the sub-token. If the roottoken is on a closing AND gateway, a sub-token per input/output is found

view_variable

- **id**:
- **variableName**:
- **clientId**:
- **instanceId**: contains a number which points to the corresponding instance
- **stringValue**: contains the content of the process variable
- **label**: contains the corresponding label for the process variable

view_role

- **identityId**: contains the primary key which points to the currently corresponding user
- **roleId**: contains the primary key which points to the corresponding role

view_costcenter

- **id**:
- **costcenterName**:
- **costcenterDescription**:
- **clientId**:
- **creationTime**:
- **creationUserId**:
- **hourly**: contains the hourly rate of the cost center
- **currency**: contains the currency that is lodged in the cost center

view_systemconfiguration

- **id**:
- **configurationName**:
- **clientId**:
- **creationTime**:
- **costCenter** : cost center of the user from the [userprofile](#)
- **department**: department of the user from the [userprofile](#)

- **personnelNumber** : personnel number of the user from the [userprofile](#)
- **phoneNumber** : telephone number of the user from the [userprofile](#)
- **tableRowCount** : Field "Display table rows" from the [userprofile](#)
- **timezoneOffset** : timezone of the user
- **lastModificationTime**: contains the last time the profile was edited
- **lastModificationUserId**: contains the primary key of the user that did the last changes
- **defaultRepresentativeId** : contains the primary key that point to the user that is lodged as representative in the [userprofile](#)
- **departmentChiefId**: contains the primary key that points to the user that is lodged as the department chief in the [userprofile](#)
- **supervisorId** : contains the primary key that points to the user that is lodged as the supervisor in the [userprofile](#)
- **companyId** : Field "Company ID in the [userprofile](#)
- **companyName**: Field "Company Name" in the [userprofile](#)
- **country**: Field "Country" in the [userprofile](#)
- **isNotifyingByMail**: Field "Email-Notification preferred" in the [userprofile](#) or in the [clientprofil](#)
- **isNotifyingAsignee**: Field "Notify assignee if his task is done by somebody else" in the [userprofile](#)
- **isIgnoringLDAPAuth**: Field "ignore LDAP authentication" in the [userprofile](#)

view_folder

- **id**:
- **folderName**:
- **clientId**:
- **creationTime**:
- **creationUserId**:
- **parentFolderId**: contains the primary key which points to itself and represents a subfolder in the documents
- **isArchiv**:

view_user

- **id**:
- **identityName**:
- **clientId**:
- **creationTime**:
- **creationUserId**:
- **displayName**: contains the full name and username (e.g. **Max Mustermann (M.Muster)**)
- **lastLogin**: contains the time when the user last logged in
- **identityType**: contains in this view only 'USER'
- **email**: e-mail adress of the user or group
- **firstname**: First Name of the user
- **lastname**: Last Name of the user
- **userProfileId**: contains the primary key that contains the userprofile
- **groups**: contains all group names (seperated with commas) in which the user is a member
- **teammanagerGroups**: contains all group names (seperated with commas) in which the user is a team manager

- **isBlocked**: states if the process instance is blocked or not
- **isArchiv**: states if the process instance is archived or not

From:

<https://wiki.tim-solutions.de/> - **TIM Wiki** / [NEW TIM 6 Documentation](#)

Permanent link:

https://wiki.tim-solutions.de/doku.php?id=en:software:dashboard:dashboard_tablestructure_v2&rev=1554128285

Last update: **2021/07/01 09:55**

